

A PART OF THE BAY WINDS PLANNED UNIT DEVELOPMENT

BOCA FALLS - PARCEL "J"

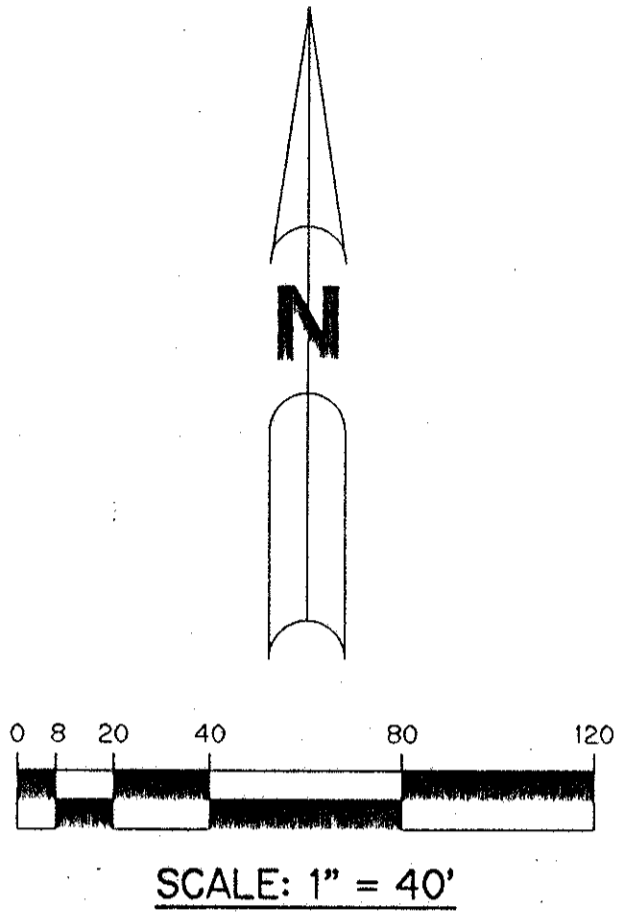
BEING A REPLAT OF ALL OF PARCEL "J" ACCORDING TO THE PLAT OF BOCA FALLS - PLAT ONE AS RECORDED IN PLAT BOOK 73, PAGES 124 THROUGH 131, INCLUSIVE, OF THE PUBLIC RECORDS OF PALM BEACH COUNTY, FLORIDA. LYING IN SECTION 22, TOWNSHIP 47 SOUTH, RANGE 41 EAST

SHEET 2 OF 3 AUGUST, 1994

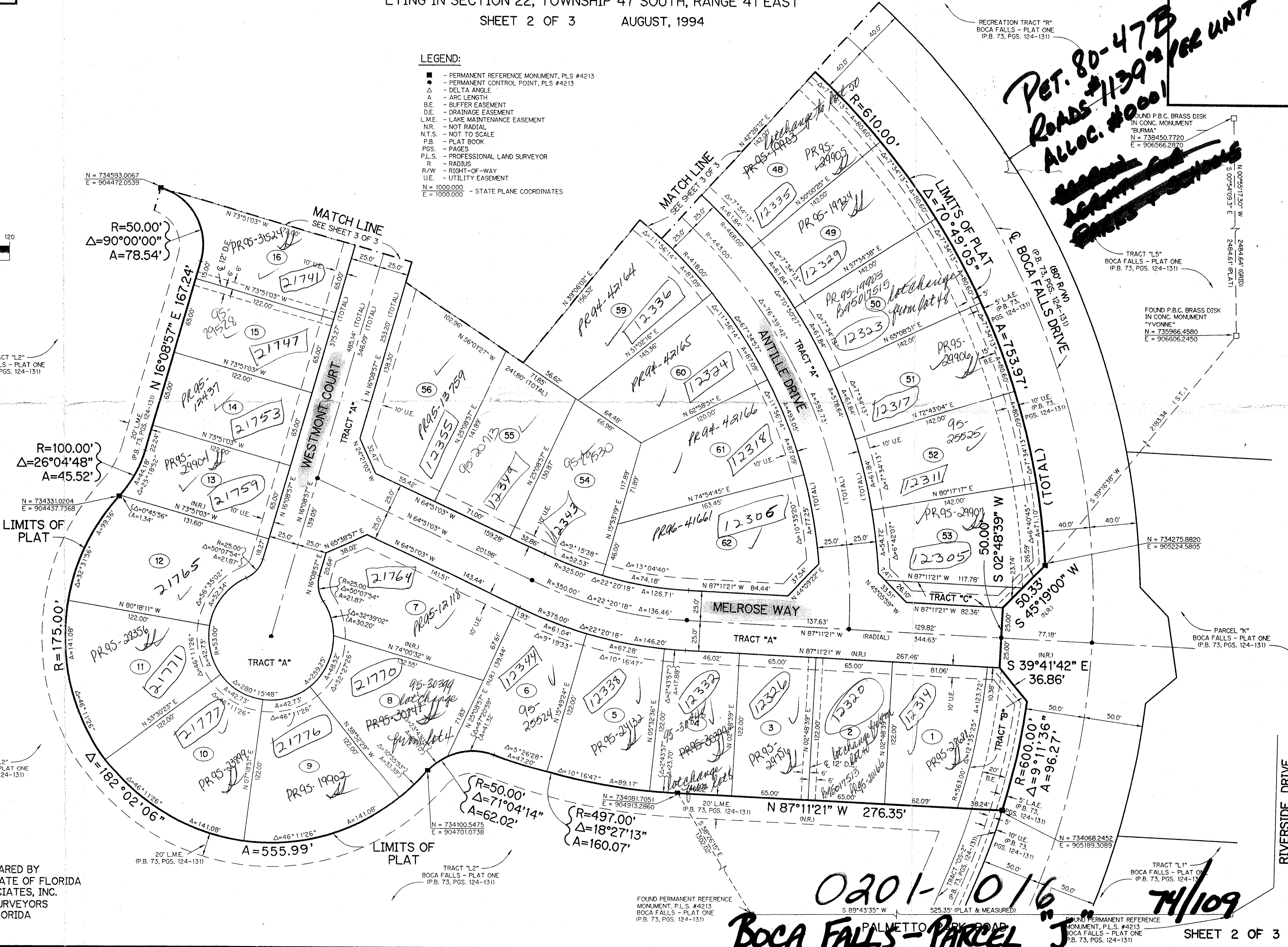
201-016

109

KEY MAP
N.T.S.



- LEGEND:
- - PERMANENT REFERENCE MONUMENT, PLS #4213
 - - PERMANENT CONTROL POINT, PLS #4213
 - Δ - DELTA ANGLE
 - A - ARC LENGTH
 - B.E. - BUFFER EASEMENT
 - D.E. - DRAINAGE EASEMENT
 - L.M.E. - LAKE MAINTENANCE EASEMENT
 - N.R. - NOT RADIAL
 - N.T.S. - NOT TO SCALE
 - P.B. - PLAT BOOK
 - P.G.S. - PAGES
 - P.L.S. - PROFESSIONAL LAND SURVEYOR
 - R - RADIUS
 - R/W - RIGHT-OF-WAY
 - U.E. - UTILITY EASEMENT
 - N = 1000.000
E = 1000.000 - STATE PLANE COORDINATES



PET. 80-47B
ROADS #139
Alloc. #0001

THIS INSTRUMENT PREPARED BY
PERRY C. WHITE P.L.S. 4213 STATE OF FLORIDA
LAWSON, NOBLE AND ASSOCIATES, INC.
ENGINEERS PLANNERS SURVEYORS
WEST PALM BEACH, FLORIDA

0201-016
BoCA FALLS - PARCEL J
SHEET 2 OF 3

TAZ-778

BOOK 74
PAGE 109
FLOOD ZONE AD-1
QUAD # 69
ZONING KT
80-47
ZIP CODE 33407
PMD NAME Bay Winds PUD
2/17/94